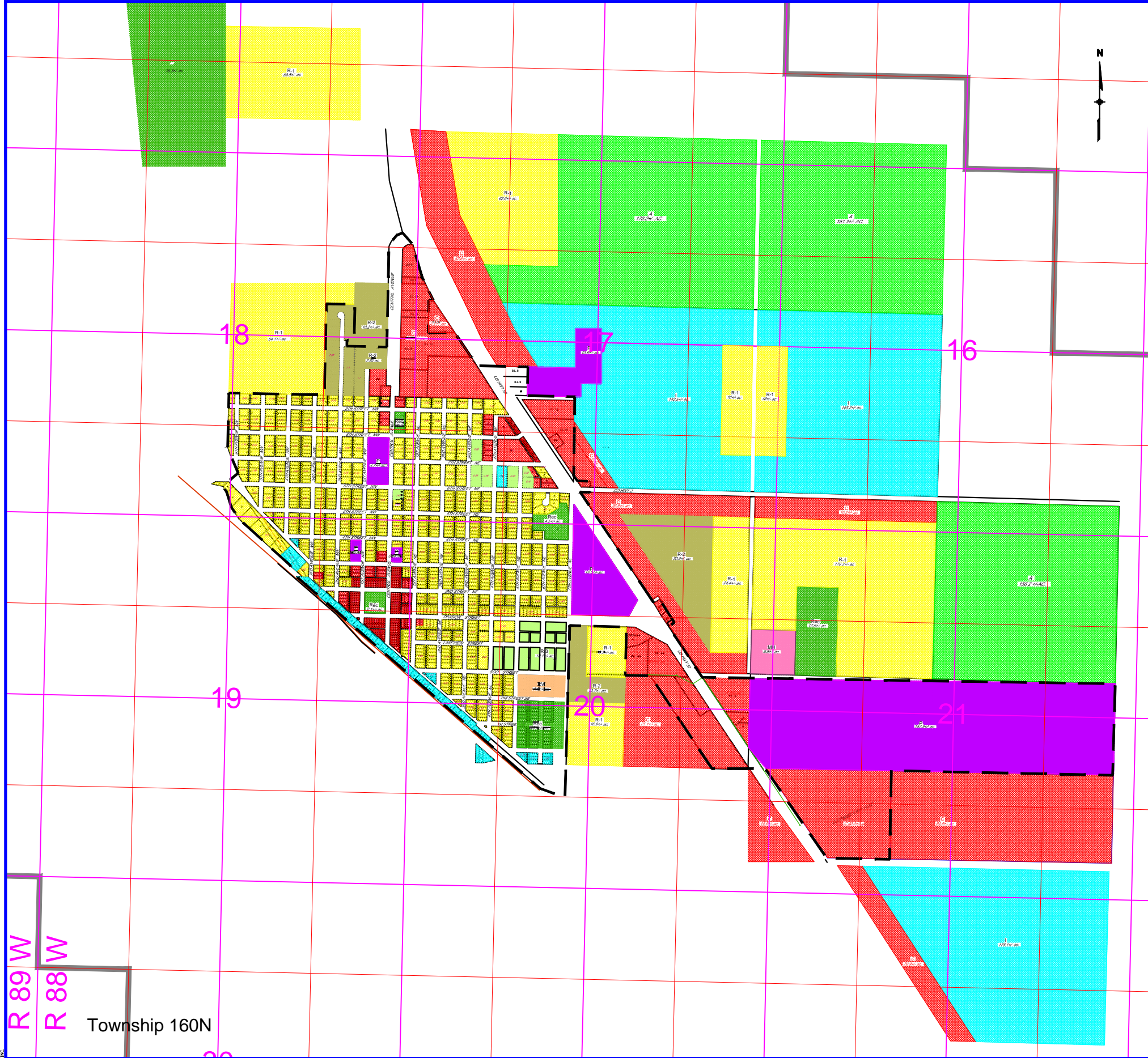


Kenmare Growth Management Plan

Future Land Use Maps

THIS DOCUMENT, TOGETHER WITH THE CONCEPTS AND DESIGN SPECIFICATIONS, IS INTENDED ONLY FOR THE SPECIFIC PURPOSE AND CLIENT FOR WHICH IT WAS PREPARED. REUSE OF AND IMPROPER RELIANCE ON, OR THIS DOCUMENT WITHOUT WRITTEN AUTHORIZATION AND ADAPTATION BY ACKERMAN-ESTVOLD ENGINEERING AND MANAGEMENT CONSULTING, INC. SHALL BE WITHOUT LIABILITY TO ACKERMAN-ESTVOLD ENGINEERING AND MANAGEMENT CONSULTING.



CITY OF KENMARE FUTURE LAND USE MAP

LEGEND

		INSIDE CORP. LIMITS	OUTSIDE CORP. LIMITS
A	AGRICULTURE	0.0 AC.	485.2 AC.
C	COMMERCIAL (C)	142.2 AC.	241.8 AC.
I	INDUSTRIAL (I)	12.6 AC.	424.1 AC.
P	PUBLIC (P)	183.8 AC.	13.9 AC.
Rc	RECREATION (Rec)	18.0 AC.	153.5 AC.
R-1	RESIDENTIAL (R-1)	177.2 AC.	369.3 AC.
R-2	RESIDENTIAL (R-2)	14.7 AC.	66.3 AC.
R-3	RESIDENTIAL (R-3)	15.2 AC.	0.0 AC.
MH	RES-MOBILE HOME (MH)	0.0 AC.	9.50 AC.
RV	RECREATIONAL VEHICLE PARK	4.6 AC.	0.0 AC.
FUTURE LAND USE TOTAL		568.3 AC.	1783.6 AC.

NO.	REVISIONS	BY	DATE	APPR.
3	REVISED LAND USES PER STEERING COMM.		04-12	
2	REVISED LAND USES PER PUBLIC MTG		02-12	
1	REVISED ETA BOUNDARY PER NDCC		02-12	

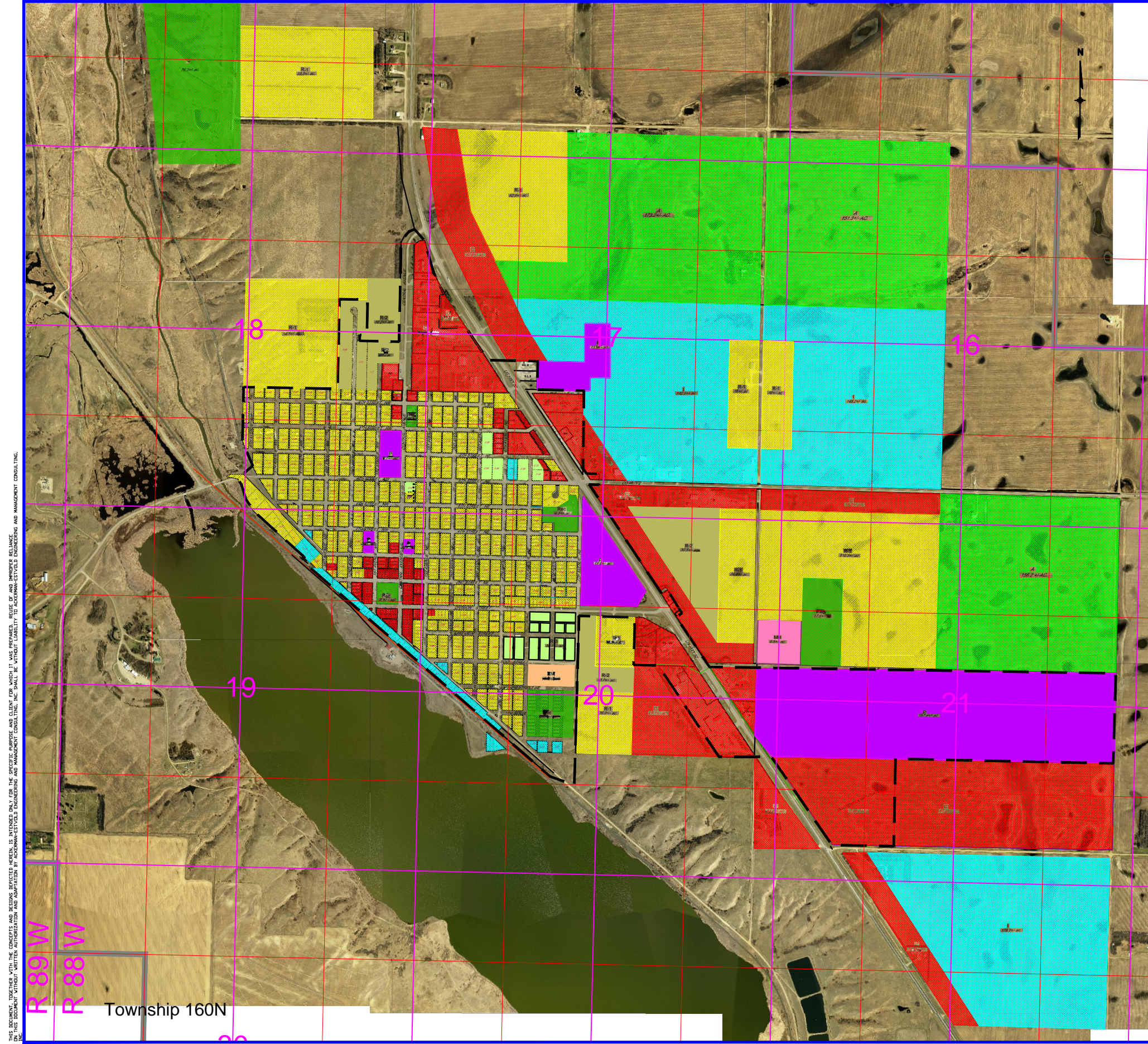
ACKERMAN-ESTVOLD
engineering and management consulting, inc.
 © 2011, ACKERMAN-ESTVOLD ENGINEERING AND MANAGEMENT CONSULTING, INC.
 6008 HIGHWAY 2 EAST, MINOT, NORTH DAKOTA 58701 (701) 837-8737
 CIVIL ENGINEERING, PLANNING, & CONSTRUCTION MANAGEMENT

SCALE (H): 1"=1500'
 SCALE (V): N/A
 DRAWN BY: ALF
 DESIGNED BY: SRW
 CHECKED BY: SRW
 DATE: 1/14/12

Future Land Use Map
Growth Management Plan
City of Kenmare, North Dakota

PROJECT NO.
R11007

DRAWING NAME
FLUM



CITY OF KENMARE FUTURE LAND USE MAP

LEGEND

		INSIDE CORP. LIMITS	OUTSIDE CORP. LIMITS
A	AGRICULTURE	0.0 AC.	485.2 AC.
C	COMMERCIAL (C)	142.2 AC.	241.8 AC.
I	INDUSTRIAL (I)	12.6 AC.	424.1 AC.
P	PUBLIC (P)	183.8 AC.	13.9 AC.
Rc	RECREATION (Rc)	18.0 AC.	153.5 AC.
R-1	RESIDENTIAL (R-1)	177.2 AC.	369.3 AC.
R-2	RESIDENTIAL (R-2)	14.7 AC.	66.3 AC.
R-3	RESIDENTIAL (R-3)	15.2 AC.	0.0 AC.
MH	RES.-MOBILE HOME (MH)	0.0 AC.	9.50 AC.
RV	RECREATIONAL VEHICLE PARK	4.6 AC.	0.0 AC.
FUTURE LAND USE TOTAL		568.3 AC.	1763.6 AC.

THIS DOCUMENT, TOGETHER WITH THE CONCEPTS AND DESIGN SPECIFICATIONS, IS INTENDED ONLY FOR THE SPECIFIC PURPOSE AND CLIENT FOR WHICH IT WAS PREPARED. REUSE OF AND IMPROPER RELIANCE ON ANY PART OF THIS DOCUMENT WITHOUT WRITTEN AUTHORIZATION AND ADAPTATION BY ACKERMAN-ESTVOLD ENGINEERING AND MANAGEMENT CONSULTING, INC. SHALL BE WITHOUT LIABILITY TO ACKERMAN-ESTVOLD ENGINEERING AND MANAGEMENT CONSULTING.

R 89 W
R 68 W
Township 160N

NO.	REVISIONS	BY	DATE	APPR.
3	REVISED LAND USES PER STEERING COMM.		04-12	
2	REVISED LAND USES PER PUBLIC MTG		02-12	
1	REVISED ETA BOUNDARY PER NDCC		02-12	

ACKERMAN-ESTVOLD
engineering and management consulting, inc.
© 2011, ACKERMAN-ESTVOLD ENGINEERING AND MANAGEMENT CONSULTING, INC.
6008 HIGHWAY 2 EAST, MINOT, NORTH DAKOTA 58701 (701) 837-8737
CIVIL ENGINEERING, PLANNING, & CONSTRUCTION MANAGEMENT

SCALE (H): 1"=1500'
SCALE (V): N/A
DRAWN BY: ALF
DESIGNED BY: SRW
CHECKED BY: SRW
DATE: 1/14/12

Future Land Use Map with Aerial
Growth Management Plan
City of Kenmare, North Dakota

PROJECT NO.
R11007
DRAWING NAME
FLUM